



河北勤亿输送设备有限公司

Hebei QinYi Conveying Equipment Co., Ltd.



中国.河北.沧州



耐磨材料制造专家



一、公司简介 Company Introduction

河北勤亿输送设备有限公司创建于 2013 年，是一家专业从事耐磨材料研发及生产的高新技术企业。公司拥有先进的生产、检测设备，主要产品耐磨焊丝、复合耐磨板等产品技术及产量已处于行业领先水平，并积极向研磨、输送设备等方面延伸发展，使公司服务领域不断拓展。公司业务范围涵盖水泥、电力、钢铁、冶金、机械等行业。

公司通过不断的创新发展、现拥有多项新型耐磨材料的发明专利，并建成了年产万吨的生产规模，公司在发展国内市场的同时，积极开拓东南亚、澳大利亚、南亚等海外市场。科学严谨的管理模式，让企业在各方面取得了良好的信誉。并通过了 ISO9001-2018 国际质量体系认证。

公司将秉承“新思维、至信行、光明未来”的经营理念，不断推进规模化、品牌化产业战略，全力打造规模一流、品牌一流、团队一流且具备国际先进技术的行业领跑企业，致力于为客户延长生产时效及大幅度降低生产成本，通过持续创新成为一家具有影响力的耐磨材料生产企业。我们欢迎全球各地的朋友前来咨询或联系，真诚期待与您的合作。





Hebei QinYi Conveying Equipment Co., Ltd. founded in 2013, We are a professional wear resistant materials research & production high technology enterprise with advanced production and testing equipments. Our technology and yield of Hard facing flux cored welding wires, wear resistant compound steel plate, etc. has been leading level in the industry, we will actively develop and extend to grinding, transportation equipment accessories, so that our service fields will continuously to expand. Our products are widely used in cement, coal-fired power generation, iron&steel, metallurgy, mining, machinery industries, etc.

Through our continuous innovation and development, now our company has a number of patents for inventions of new wear resistant materials. And average output more than ten thousand tons of production scale. Now we aren't only in the development of the domestic market, but also actively explore Southeast Asia, Australia, South Asia and other overseas markets. Meanwhile we also passed ISO9001-2018 international quality system certification.

Our business concept is "New Thinking, Honesty, Brilliant Future". Promote scale&brand industrial strategy, constantly to build the international advanced technology leading enterprise with best scale, best brand and best team. We will strengthen our capability for lower cost to our customers. Welcome friends from all of the world to contact us, sincerely look forward to cooperating with you.



二、耐磨焊丝 Hardfacing welding wire

我公司在耐磨药芯焊丝领域拥有多年的生产经验、完善的工艺配方、多条先进专业的耐磨药芯焊丝生产线，并融合了专业的生产工艺。我们的药芯焊丝质量优、品种多，型号齐全，多年来深受广大用户的认同与信赖，产品行销全国。

我们的耐磨药芯焊丝具有显著的抗磨损、抗冲击、抗腐蚀和耐热性能，可用于生产各种规格的耐磨钢板，各类受磨损、受冲击部件的硬面堆焊处理，从而延长其使用寿命，或对新部件提前进行磨损预防准备处理。

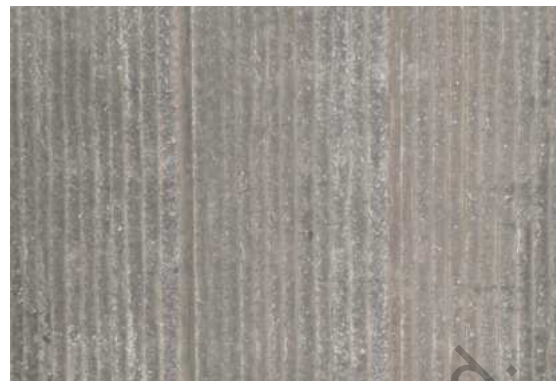
In hardfacing welding wire production areas, we have many years of production experience, perfect process formula, with professional technology. For years, with high quality and rich variety, our hardfacing flux cored wires are received well recognition and trust, and sold well in the whole country.

Our welding wires have remarkable excellent high abrasion, impact, corrosion and heat resistant performance, could produce wear resistant compound plates, and hardfacing treatment of the abraded and impacted components, could extend the service life of the components, or pre-emptively on new components, or as part of maintenance programme.





三、复合耐磨钢板 Wear resistant compound plate



我公司从事耐磨堆焊事业多年，拥有多台自行研发的自动堆焊机。我们采用目前最先进的焊接工艺以及自行研制生产的优良耐磨焊丝，在 Q235B 钢板（也可以根据客户需要选择基材）上，堆焊成过共晶高铬合金复合耐磨钢板。我公司生产的复合耐磨板，金属化合物以比较弥漫的形式分布于固溶体基材上，并被实际用作强化相，从而使整个合金的强度、硬度、耐磨性得到很大的提高。

我公司目前已建成年产万吨复合耐磨钢板的生产规模。我们的耐磨钢板以高耐磨性、耐冲击、耐腐蚀和高塑韧性，极其适用于磨损极为严重的工况。我们的耐磨钢板及其制品可以有效延长相关行业耐磨设备的使用寿命，降低停机和维修时间，获得了国内多家水泥、钢铁和电力等行业企业的信赖。





We have many years of experience in producing Chromium Carbide Overlay Wear Plate, and have a number of Self-development automatic hardfacing machines. With the currently the most advanced surface welding technique and the self developed excellent high quality welding wire, on the base plate (Q235B or other steel plates as customized), surface-welded hypereutectic high Chromium alloy wear resistant compound steel plate. In our compound plates, the metallic compounds are distributed by a more diffuse form on the solid solution base plate and are actually used as reinforcement phase, and significantly increased the alloy's intensity, hardness and wearability.

Now, we got average output more than ten thousand tons of wear plates per year. With the high abrasion, impact performance, corrosion resistance and high ductility, our plates extremely apply for the badly abraded working conditions. Our plates and the wear resistant plate products could effectively prolonging the life of related industries' equipment, reducing downtime and minimizing maintenance. We are received well recognition and trust in cement, steel, mining industry and other related industries.

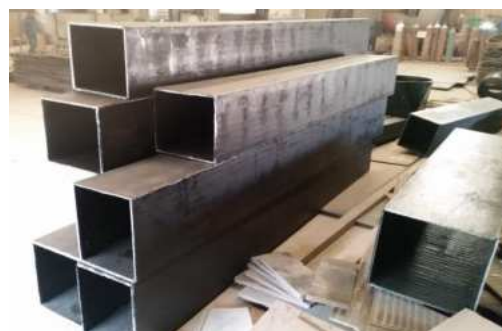
复合耐磨钢板专用药芯焊丝

Description of hardfacing welding wires for wear plate

特性 Characteristics	具有高度抗磨、中度冲击性能。堆焊硬面有细微裂缝，不可机加工。 Extremely high abrasion and medium impact resistant performance. The weld deposit exhibits micro cracks, cannot be machined.
应用范围 Application	耐磨板专用焊丝。适用于中度冲击，高度磨损环境下的溜槽、筛板、输送通道、管道、耐磨衬板、风机外壳、护套、料仓、衬套等。应用温度范围不超过350℃。 Special for produce Wear resistant compound steel plate. hardface repairing for Chutes, Sieves, Delivery channels, Pipes, Lining plates, Fan coats, Protecting shields, Storage bins, Liner bushings, etc. Application temperatures should not exceed 350℃
堆焊注意项 Note.	保证基材板的平整度。摆动焊接跳格距离33mm，摆弧距离35mm。焊层单层厚度2-4.5mm之间。及时清理堆焊渣灰。 Ensure smooth of the Base plate. Weave welding's displacement distance is 33mm, Arc weaving distance is 35mm. each layer's thickness should be limited to 2-4.5mm. Clean up the welding Slags timely.



四、复合耐磨钢板应用 Application of wear resistant compound plate





Hebei QinYi
Conveying Equipment Co., Ltd.